

**FUJIFILM**  
expect INNOVATION™

# 1/3 Inch HDTV Lenses



**DIGI**  
POWER

**QuickZoom**

**HTS18x4.2BERM**

*Technology That Inspires...*

**FUJINON**

# HTs18x4.2BERM

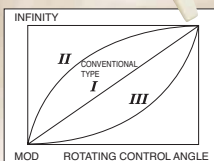


LENS	HTs18x4.2BERM
Zoom Ratio / Format	18X / 1/3"
Focal Length	4.2 to 76 mm
Extender	(2X) 8.4 to 152 mm
Maximum Relative Aperture (2X)	1:1.4 (4.2 ~ 76 mm)
Angular Field of View 16:9 Aspect Ratio (2X)	4.2 mm 63° 49' x 39° 35' 76 mm 3° 56' x 2° 13' 8.4 mm 34° 35' x 19° 51' 152 mm 1° 52' x 1° 6'
M.O.D. from Image Plane	0.84 m
M.O.D. from Front of Lens	0.60 m
Object Dimensions at M.O.D.	5.5 mm 741 x 417 mm 100 mm 43 x 24 mm
Filter Size	ø 82 mm P=0.75
Dia ø x Length (w/o Hood)	ø85 x 206.6 mm
Weight (w/o Hood)	1.58 kg
Options	16 Bit Encoder
Features	Inner Focus / Quick Zoom / Zoom Limit

## ACCESSORIES: HD & SD ENG/EFP

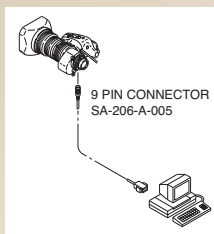
### THREE-MODE FINE FOCUS

By shifting the sensitivity from the wide side to the telephoto side of the focus range, this control provides more precise focusing for studio or sports productions.



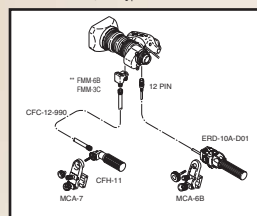
### SERIAL DIGITAL REMOTE CONTROL BY PC

Remote control of zoom, focus and iris for Digipower lenses is possible via serial digital link, providing accurate positioning for virtual studio and other applications requiring digital precision.

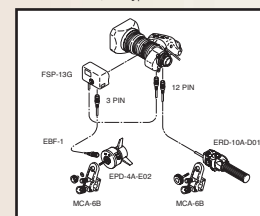


### DIGI POWER REAR CONTROL KITS

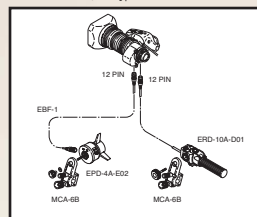
**MS-11D Manual Focus/Servo Zoom**  
For use with RM/ZM type lenses.



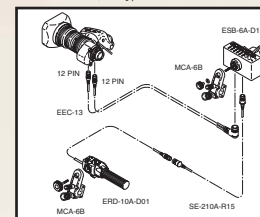
**SS-11D Servo Focus/Servo Zoom**  
For use with RM/ZM type lenses.



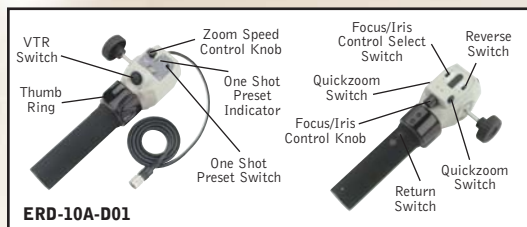
**SS-13D Servo Focus/Servo Zoom**  
For use with RD/ZD type lenses.



**SS-14S Servo Focus/Servo Zoom**  
For use with RD/ZD type lenses.

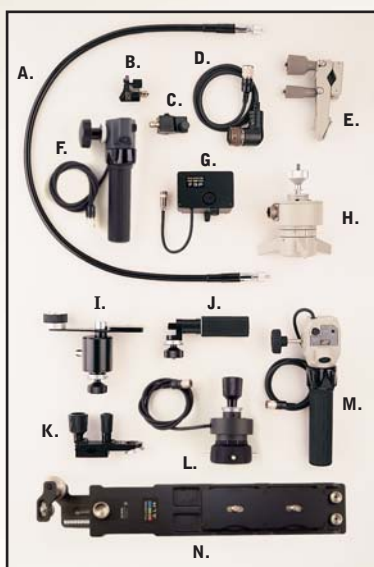


### DIGI ZOOM DEMAND\*



\*New Digital features only available on ERM/ERD-M/S.

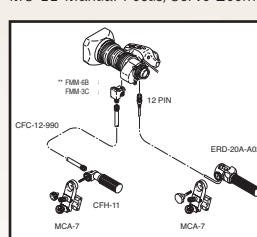
- A. CFC-990 Flex Cable
- B. FMM-3B/6B Manual Module
- C. ZMM-6 Manual Module
- D. EBF-1 Focus Cable
- E. MCA-6
- F. ERD-20A-A02 Zoom Demand
- G. FSP-13G Focus Positional Module
- H. EPD-4A-E02
- I. CZH-14 Focus Handle
- J. CFH-11 Focus Handle
- K. MCA-7 Mounting Clamp
- L. EPD-20A-A01/A02 Focus Demand
- M. ERD-10A-D01 Zoom Demand
- N. ALH-117A-02A Support for HA36x/A36x HA42x



Note: ERD-20A-A02 (F) and EPD-20A-A02 (L) replace the ERD-T22 and EPD-2CA.

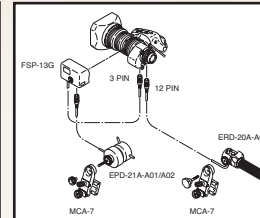
### STANDARD REAR CONTROL KITS

**MS-11 Manual Focus/Servo Zoom**

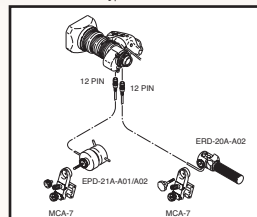


**SS-11 Servo Focus/Servo Zoom**

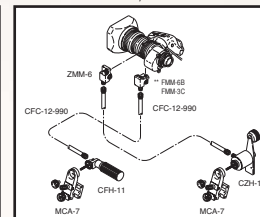
Not available on HA42x, HA36x and A36x



**SS-13A Servo Focus/Servo Zoom**  
For use with ERD type lenses.



**MM-11 Manual Focus/Manual Zoom**  
Not available on HA42x, HA36x and A36x



\*Specify camera type

\*\*FMM-3C for use on HA36x, HA42x and HA25x

### MOUNTING SYSTEM

Fujinon has replaced the "cone" shaped mounting system with the "tooth" system. The cone type may still be ordered as a special order.



New Style MCA-7



Old Style MCA-1A (Discontinued)

For Sales Contact Information go to  
**www.Fujinon.com**