

SNC-XM632

Network Mini Dome FHD Camera – X Series

SONY
make.believe

Mini Dome 1080/30p Camera Powered by IPELA ENGINE EX™

- Maximum resolution of 1920 x 1080 pixels with the Exmor™ CMOS sensor
- Dynamic range equivalent to 90 dB achieved with View-DR technology
- Minimum illumination of 0.2 lx (tentative) in B/W mode and 0.2 lx (tentative) in Color mode at 50 IRE
- IK8-rated vandal-resistant (tentative) and IP66-rated waterproof/dust-tight features
- Three-hinge structure for easy and flexible camera angle adjustment
- Horizontal viewing angel of 113° (tentative)
- Meets safety regulations for outdoor surveillance and commercial vehicle applications, including ISO16750



KEY FEATURES

- IPELA ENGINE EX signal processing system developed based on Sony's unique signal processing and intelligent video analytics technologies to provide unique features such as View-DR, XDNR, and DEPA Advanced

IPELA
ENGINE EX

- View-DR – Sony's innovative wide dynamic range technology – to capture objects clearly and adaptively even under very harsh, severe backlight or highlight conditions

View-DR



OFF



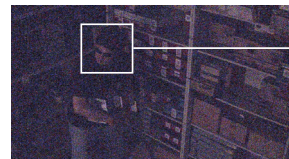
ON

Actual Images

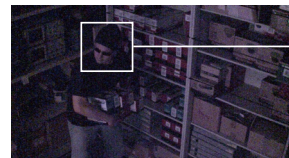
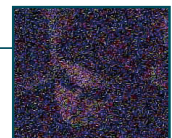
- Visibility Enhancer (VE) to optimize the brightness and color reproduction of an image dynamically on a pixel-by-pixel basis while continuously adapting to the scene within the given dynamic range
- IK8-rated vandal-resistant feature to protect the camera from destructive behaviors (tentative)
- IP66-rated waterproof and dust-tight feature for outdoor surveillance and indoor locations where water ingress may pose an issue
- DEPA Advanced Intelligent Video Analytics to trigger an alarm based on user-defined rules



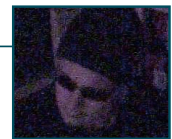
- XDNR (eXcellent Dynamic Noise Reduction) technology for clear images without motion blur under low illumination




OFF



ON



Actual Images

- Three-hinge structure to turn the lens unit in panning, tilting, and rotating directions for easy and flexible camera angle adjustment
- Picture mode selectable from a range of camera scenes in the setting menu to optimize picture quality in various applications
- VBR (variable bitrate) or CBR (constant bitrate) compression mode selectable to correspond with various network conditions
- Edge Storage function to record video and audio data with a memory card attached to the camera (tentative)
- Image Stabilizer to minimize the effect of camera shake or vibration to achieve less blurry images
- Electronic D/N (Day/Night) function to switch to Day or Night mode depending on the light level
- Smartphone viewer for accessing the camera from a smartphone
- ONVIF (Open Network Video Interface Forum) Profile S conformance 
- Easy initial network settings by supplied SNC Easy IP Setup Guide application
- Built-in microphone
- Powered by IEEE 802.3af (PoE system) via an RJ-45 connector for easy installation

Preliminary

Connect Your Vision

IPELA™

SPECIFICATIONS

SNC-XM632	
Camera	
Image Sensor	1/2.9-type progressive scan Exmor CMOS sensor
Number of Effective Pixels	Approx. 2.14 Megapixels
Minimum Illumination (50 IRE)	Color: 0.2 lx (tentative) B/W: 0.2 lx (tentative)
Minimum Illumination (30 IRE)	TBD
Dynamic Range	Equivalent to 90 dB with View-DR technology
Gain	Auto
Shutter Speed	1/1 s to 1/10,000 s
Exposure Control	Exposure compensation, AGC, Shutter speed
White Balance	ATW, ATW-PRO, Fluorescent lamp, Mercury lamp, Sodium vapour lamp, Metal halide lamp, White LED, One push WB, Manual
Lens	Fixed lens
Zoom ratio	Digital 3x
Horizontal Viewing Angle	113° (tentative)
Vertical Viewing Angle	61° (tentative)
Viewing Tilt Angle	TBD
Focal Length	f = 2.8 mm
F-Number	F2.0
Pan/Tilt/Rotation Angle (Manual)	Pan: ±30° Tilt: 0° to +90° Rotation: ±175°
Camera Features	
Day/Night	Electronic D/N
e-Flip	Yes
Wide-D	View-DR
Tone Correction	Visibility Enhancer (VE)
Noise Reduction	XDNR
Image Stabilizer	Yes
Picture Mode	Yes
Privacy Masking (number)	20
Privacy Masking (shape)	Quadrangle formed by any four corner points
Privacy Masking (color/effect)	Opaque (14 colors: Black, White, Red, Green, Blue, Cyan, Yellow, Magenta, Gray (6 scales)), Mosaic
Edge Storage	TBD
Vandal Resistance	IK08 (tentative)
Ingress Protection	IP66
Superimpose Number	3 independent positions for characters (Codec, Date & time, Event, text (max. 64 characters)), 1 independent position for logo marks
Superimpose Language	English
Menu Language	English, Japanese, Chinese (simplified), Chinese (traditional), French, Spanish, German, Italian, Korean, Portuguese, Russian, Arabic, Hindi, Vietnamese, Thai
Smartphone viewer	Yes
Video	
Resolution	1920 x 1080, 1280 x 720, 1024 x 576, 720 x 576, 720 x 480, 704 x 576, 640 x 480, 640 x 360, 352 x 288, 320 x 184 (H.264, JPEG)
Compression Format	H.264 (High/Main/Baseline Profile), JPEG
Maximum Frame Rate	H.264: 30 fps (1920 x 1080) JPEG: 30 fps (1920 x 1080)
Bitrate Compression Mode	CBR/VBR (selectable)
Range of Bitrate Setting	64 Kbps to 32 Mbps
Solid PTZ	Yes
Adaptive Rate Control	H.264
Bandwidth Control	JPEG
Multi Streaming Capability	Triple streaming
Number of Clients	20
Intelligent Video Analytics	
Analytics Architecture	DEPA Advanced
Intelligent Motion Detection	Yes
Face Detection	Yes
Tamper Alarm	Yes
Scene Analytics	Passing, Intrusion, Left Object Detection, Removed Object Detection
Audio	
Compression Format	G.711/G.726/AAC (16 kHz, 48 kHz)
System Requirements	
Operating System	Windows XP (32 bit) Professional Edition Windows Vista (32 bit) Ultimate, Business Edition Windows 7 (32/64 bit) Ultimate, Professional Edition Windows 8 Pro (32/64 bit)
Processor	Intel Core i7 2.8 GHz or higher
Memory	2 GB or more
Web Browser	Microsoft Internet Explorer Ver. 7.0, Ver. 8.0, Ver. 9.0, Ver. 10.0 Firefox Ver. 19.02 (plug-in free viewer only) Safari Ver. 5.1 (plug-in free viewer only) Google Chrome Ver. 25.0 (plug-in free viewer only)

SNC-XM632	
Network	
Protocols	IPv4, TCP, UDP, ARP, ICMP, IGMP*, HTTP, DHCP, DNS, NTP, RTP/RTCP, RTSP over TCP, RTSP over HTTP, SMTP, IPv6, HTTPS, SNMP (v1, v2c, v3), SSL
QoS	DSCP
Multicast Streaming Support	Yes
ONVIF Conformance	Profile S
Authentication	IEEE 802.1X
Interface	
Microphone Input	Built-in microphone
Network Port	10BASE-T/100BASE-TX (RJ-45)
Card Slots	TBD
Confirmed SD Card Type	TBD
General	
Power Requirements	IEEE 802.3af compliant (PoE system)
Power Consumption	9.0 W max. (heater ON) (tentative) 3.2 W max. (heater OFF) (tentative)
Operating Temperature	-25°C to +50°C (-13°F to +122°F) (tentative)
Cold Start Temperature	Higher than -20°C (-4°F) (tentative)
Storage Temperature	-30°C to +60°C (-22°F to +140°F)
Operating Humidity	20% to 80%
Storage Humidity	20% to 80%
Built-in Heater	Yes
Dimensions (W x H x D)	Approx. ø114 mm x 47 mm (ø4 1/2 inches x 1 27/32 inches)
Mass	TBD
External Material	Top cover/Dome cover: PC (polycarbonate)
External Color	TBD
Fire Retardant	TBD
Safety Regulations	UL12044, UL50, IEC60950-1, IEC60950-22, IEC60529, IEC62262, ISO16750, EN55022, EN61000-3-2, EN61000-3-3, EN55024, EN550130-4, FCC/C (Class B), AU/NZ EMC, KN22/KN24 (Class B), UN ECE R10 Rev.4, VCCI (Class B), EAC (GOST-R)
Supplied Accessories	CD-ROM (supplied programs) (1) Installation Manual (1) Template (1) Safety regulations (1) Warranty Booklet (1) Mounting Adapter (1) Screws (4) Lens Adjusting Tool (1)

Distributed by

©2013 Sony Corporation. All rights reserved.
Reproduction in whole or in part without permission is prohibited.
The values for mass and dimension are approximate.
"SONY", "make.believe", "IPELA", "IPELA ENGINE EX", "Exmor", and
"DEPA" are trademarks of Sony Corporation.
All other trademarks are the property of their respective owners.