

ADPRO® FastTrace™ 2E Hybrid

Network Video and Audio Recorder/Transmitter

Description

The ADPRO FastTrace 2E Hybrid by Xtralis is the latest H.264 single- and multi-site video security system supporting up to 20 analogue and/or IP/Megapixel cameras. It has been designed, developed and manufactured by Xtralis, the leader in video security technologies.

When used in conjunction with the ADPRO VideoCentralPlatinum / Heitel EMS management software, the unique combination of video alarm verification, remote site monitoring and control, and evidential quality recording (H.264), it provides the most flexible and first remote-enabled programmable multi-site video security system available today.

The ADPRO FastTrace 2E Hybrid delivers optimised image quality, efficient bandwidth and hard disk utilisation, in addition to:

- H.264 compression
- Up to 30 ips NTSC/25 ips PAL per camera
- Analogue: CIF/QCIF/2CIF/4CIF – SIF/QSIF/2SIF/4SIF
- RAID 1 support
- Scalable up to 4, 8, 12, 16 or 20 analogue and/or IP cameras (H.264 IP cameras: Axis, Sony, Samsung, Sanyo, ACTi, Brickcom, Pelco, and many others. For the complete list please check the "Supported Cameras" document on www.xtralissecurity.com.)
- Fully integrated with ADPRO range of security solutions

Features

- The ADPRO FastTrace 2E Hybrid utilises H.264 compression technology which optimises bandwidth utilisation while providing the highest quality video with the lowest bandwidth.
- Dual codec (analogue cameras) or use of Multi stream (IP cameras) for independent recording, analytics and viewing quality settings (per camera).
- One audio input per video input for synchronised audio recording.
- The intuitive web interface gives authorised users remote access to live and recorded video over the network.
- Provides extremely fast searches through large amounts of recorded video with unique post-record metadata motion search capability. Results are presented on a timeline in seconds without large video data transfers across the network.
- The ADPRO FastTrace 2E Hybrid can be managed and configured from the intuitive FastTrace 2E internet browser interface.
- Integrates on-board video analytics capabilities (up to 20 channels) for indoor/outdoor loitering detection (LoiterTrace) and outdoor perimeter detection (sterile zone IntrusionTrace detection) using unique algorithms with, for example, headlight suppression, thermal camera support and iLids compliance.

Video Alarm Verification

- Live and recorded video transmission, two-way audio, remote camera control and flexible integration capabilities provide full remote site surveillance and control, eliminating the need for on-site guards.
- Event-based video transmission pushes video on alarm from the remote site to the ADPRO VideoCentralPlatinum / Heitel EMS management software remote video and alarm management software and ADPRO M3000 command and control software.
- Rapid assessment of video alarm images enables the cause of alarms to be viewed quickly and efficiently, allowing for real time intervention as necessary and minimising nuisance alarm responses.
- Use ADPRO FastTrace 2E Hybrid and the ADPRO VideoCentralPlatinum / Heitel EMS management software remote video and alarm management software or ADPRO M3000 command and control software for centralised management of multiple remote sites to improve efficiency and reduce personnel costs.
- A high level SDK interface is available to support direct integration to 3rd party receiving software. See the ADPRO Advantage Programme for further information.



Key Benefits

- H.264 best-in-class video compression, highest quality video with lowest bandwidth
- Dual codec (analogue cameras) or use of Multi stream (IP cameras) for totally independent recording and viewing quality settings (per camera)
- Resolutions:
 - Analogue (PAL/NTSC): CIF/SIF, QCIF/QSIF, 2CIF/2SIF, 4CIF/4SIF
 - IP: up to HD/MP resolution (depending on the camera)
- Intuitive Web interface for viewing live or recorded video and system configuration
- Automatic video alarm transmission to ADPRO VideoCentralPlatinum / Heitel EMS management software and ADPRO M3000 software
- CMS control override function
- Two-way audio capability, one bi-directional half-duplex audio channel available per video channel with optional audio switcher
- Extremely fast post-record metadata motion search capability
- Local on-board input/outputs and extended input/outputs with up to 128 total input/outputs via optional Ethernet PoE modules
- Camera supervision for contrast, no video signal and camera tamper (moved or defocused)
- Alarm transmission capability:
 - Primary IP/3G (optional*)
 - Backup 3G (optional*)
 - Support for Dynamic IP addresses (DNS)
- Communication channel supervision via automatic Site Pulse watchdog signal
- Time synchronisation via NTP time servers
- Integrated PTZ telemetry support with PTZ presets on alarm (RS485, via Coax)
- Small desktop case - 19" rack mount
- SDK to interface to 3rd party receiving software
- High Level Interface to ADPRO Presidium intelligent video analytics platform
- On-board optional video analytics extensions for:
 - Indoor/ outdoor Loitering Detection (LoiterTrace**): detects loitering persons, even when they remain static for a long time
 - Outdoor Perimeter Detection (IntrusionTrace***): designed for outdoor sterile zone monitoring
- Smartphone/ Tablet applications for video monitoring, alarm reception, settings, and function execution.

* 3G-modem not included - For more information, please contact your Xtralis representative.

** LoiterTrace: Separate datasheet available

*** IntrusionTrace: Separate datasheet available

ADPRO®
by **xtralis**

ADPRO® FastTrace™ 2E Hybrid

Network Video and Audio Recorder/Transmitter

Specifications

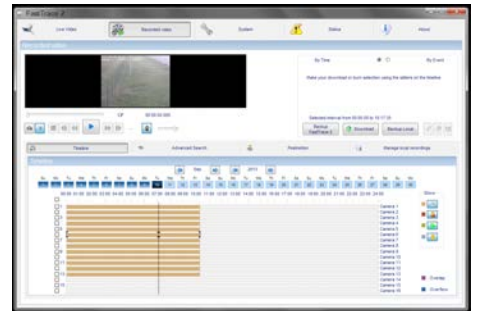
Video Input	4, 8, 12, 16 or 20 analogue and/ or IP cameras; (H.264 IP cameras: Axis, Sony, Samsung, Sanyo, ACTi, Brickcom, Pelco). The latest list of compatible IP cameras and their respective integrated functionality is available on our website.
Video Output	SVGA – Multiple matrix type views
Video Compression	H.264
Video Resolution	Analogue (PAL/NTSC): CIF/SIF, QCIF/QSIF, 2CIF/2SIF, 4CIF/4SIF IP: up to HD/MP resolution (depending on camera)
Images/Second	Analogue/IP: PAL/NTSC: up to 25/30 ips
Bandwidth Consumption	6 ips CIF, 70 kb/sec; 12 ips 4CIF, 400 kb/sec
Bandwidth Management	Configurable variable or constant bitrate Configurable bandwidth limiter
Hard Disks	1TB up to 16TB onboard storage. Disk supervision and HDD Information page RAID 1 support
Audio Input	1 per camera
Audio Output	Standard 1 line level output, Optional: up to 1 per camera via audio switcher(s)
Motion Detection	4 zones adjustable per camera
System	PC platform - Linux OS
Audio Compression	OggVorbis Codec 16 Kbps
Command Inputs	On the box (max. 40, depending on the model) or via Ethernet I/O module with PoE (up to 128)
Relay Outputs	On the box (max. 16, depending on the model) or via Ethernet I/O module with PoE (up to 128)
Network Protocols	TCP, UDP, TELNET, HTTP, SMTP, RTSP, RTP, NTP
Application Update	Local and remote
Web Server	Integrated
Com Ports	USB-RS232 for serial comms USB-RS232/RS485 (or Basic on the box I/O-RS485 port) for PTZ control
Ethernet	10/100/1000 Base-T, auto detection, full duplex, RJ45
Recording Support	Up to 4 SATA hard disks per system – HDD type: 1TB, 2TB or 4TB – max. 16 TB per system RAID 1 support
Recording Type	Continuous, Event, Input, Motion Detection, Alarm Over IP
Remote Visualisation	Web client; Windows XP, Vista, Windows 7, Windows 8, Server 2003, Windows Server 2008 (R2)
PTZ Cameras	Via RS485 or via coax, extensive list available
Management	Web browser interface, ADPRO VideoCentralPlatinum / Heitel EMS management software and ADPRO M3000
Power Supply	90-260 VAC, 50/60 Hz
Operating Temperature	5 – 40 °C Ethernet I/O module : 0 – 40 °C
Humidity	20 – 93 % rh – non-condensing Ethernet I/O module : <= 93 % rh – non-condensing
Warranty	Twenty four (24) months on all components

ADPRO FastTrace 2E Hybrid - 19" (30)

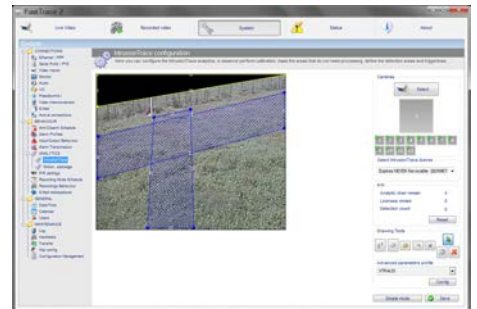


Dimensions	W: 445 mm (17.52") H: 132 mm (5.20") L: 300 mm (11.8")
-------------------	--------------------------------------------------------------

FastTrace 2 Web-Client Interface (Recording)



FastTrace 2 Web-Client Interface (Analytics)



Smartphone Applications for Video Monitoring

Smartphone/ Tablet applications for video monitoring, settings, and function execution



www.xtralis.com

UK and Europe +44 1442 242 330 D-A-CH +49 431 23284 1 The Americas +1 781 740 2223

Middle East +962 6 588 5622 Asia +86 21 5240 0077 Australia and New Zealand +61 3 9936 7000

The contents of this document are provided on an "as is" basis. No representation or warranty (either express or implied) is made as to the completeness, accuracy or reliability of the contents of this document. The manufacturer reserves the right to change designs or specifications without obligation and without further notice. Except as otherwise provided, all warranties, express or implied, including without limitation any implied warranties of merchantability and fitness for a particular purpose are expressly excluded.

Xtralis, Xtralis logo, The Sooner You Know, VESDA, ICAM, ECO, OSID, HeiTel, ADPRO, IntrusionTrace, and LoiterTrace are trademarks and/or registered trademarks of Xtralis and/or its subsidiaries in the United States and/or other countries. Other brand names mentioned herein are for identification purposes only and may be trademarks of their respective holder(s). Your use of this document does not constitute or create a licence or any other right to use the name and/or trademark and/or label.

This document is subject to copyright owned by Xtralis. You agree not to copy, communicate to the public, adapt, distribute, transfer, sell, modify or publish any contents of this document without the express prior written consent of Xtralis.

Doc. no. 26491_01

ADPRO®
by **xtralis®**