

DS-55



A 55" dual-sided display featuring 23.4mm slim profile and flexible display orientation, designed specifically for professional digital signage applications in diverse indoor surroundings.

Featuring Full HD resolution, 450 nits of brightness and a 3000:1 contrast ratio, the DS-55 is capable of delivering crisp images in diverse indoor environments. Dual HDMI connections make it easy for IPC or media player integration and allow displaying individual contents on each screen. With the metal housing and flexible display orientation, the DS-55 is ideal for retail, points of sale, and advertising markets in public environments.

- > 55" dual-sided LCD display
- > 23.4mm slim profile
- > FHD 1920 x 1080 resolution
- > MVA panel for wide viewing angle
- > 450 nits of brightness and 3000:1 contrast ratio fulfill diverse indoor applications
- > Dual HDMI connections for connecting media players/ IPCs easily
- > Separately driven display contents on each screen
- > Remote control for controlling display and changing OSD setting easily
- > Flexible display orientation: portrait/ landscape
- > Light weight and mounting holes on display sides for easy installation
- > Durable metal casing

DS-55

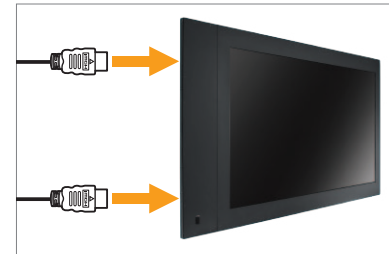
Specifications

DS-55

Panel	Panel Type	LED-Backlit TFT LCD (MVA Panel)
	Panel Size	55"
	Max. Resolution	1920 x 1080 (FHD)
	Pixel Pitch (H x W)	0.63 x 0.63 mm
	Brightness	450 nits
	Contrast Ratio	3000:1 (Typical)
	Viewing Angle	178 (Typical)
	Viewable Size (H x V)	1209.6 x 680.4 mm
	Display Colour	10.7B
	Response Time (GTG)	6.5 ms
	Colour Gamut	72 (%)
Surface Treatment	Haze 11%, 3H	
Input	HDMI	HDMI x 2 (With HDCP)
Power	Power Supply	AC 110~240V, 50/60Hz
	Power Consumption	230 W (Typical)
	Light source	LED
Operating Conditions	Temperature	0°C~40°C (32°F~104°F)
	Humidity	20%~80% (No condensation)
Storage Conditions	Temperature	-10°C~50°C (14°F~122°F)
	Humidity	20%~80% (No condensation)
Dimensions	Display (H x W x D)	1516 x 858 x 23.4mm (59.69 x 33.78 x 0.92in)
	Bezel (U/D/L/R)	64/239/87/87mm (2.52/9.41/3.43/3.43in)
	Power Box (H x W x D)	406 x 254 x 55mm (15.98 x 10 x 2.17in)
	Packing (W x H x D)	1618 x 970 x 249 mm (63.7 x 38.19 x 9.8in)
Weight	Display	45.5kg (100.31lb)
	Power Box	4kg (8.82lb)
	Gross	56.5kg (124.56lb)
Accessories	Supplied	Power cable 110~240V x1 Power box x1 (with 24V&12V line) Remote controller x1 (battery CR 2025 3V) IPC
	Optional	



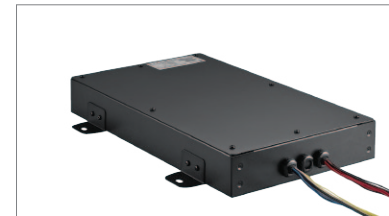
Durable metal casing with 23.4mm slim profile



Dual HDMI connectors for easily connect to media players or IPCs



Flexible orientation: portrait/ landscape



Independent power box