

Aimetis Enterprise Manager™ (AEM) provides centralized, cloud-based management for multi-location video surveillance deployments. It helps to streamline IT operations through unified health monitoring and settings management, while automating software and firmware updates for network cameras and Aimetis products.

Distributed installations of Aimetis Symphony™ video management software (VMS), R-Series Network Video Recorders (NVRs), E-Series physical security appliances (PSAs) and Thin Clients are ideally suited to AEM. When used in combination with the AEM Bridge, Enterprise Manager can dramatically reduce the effort required to manage geographically dispersed network cameras.

Key Benefits

✓ Maximize uptime

Identify issues quickly through the web dashboard or e-mail status summaries. Reported events include server or camera offline, storage failures, as well as CPU and memory threshold violations.

✓ Lower TCO

Centralized management reduces upfront configuration and ongoing administration time. Initial setup time is reduced through inherited settings (via Policies) from the cloud. Subsequent Policy changes are invoked by simply pushing updates to servers. Software updates can also be centrally configured and automatically installed.

✓ Increase compliance

Settings explicitly defined by Enterprise Manager cannot be changed locally, avoiding issues with inconsistent and non-compliant configurations.

✓ Reduce Risk

Increase the Security of Security by addressing common attack vectors. Ensure that cameras are not compromised through default, weak, or static passwords. Replace camera firmware versions containing security flaws. AEM allows administrators to simplify best practice adoption and remedy vulnerabilities. Use the cloud console to automate camera password changes, as well as roll out system-wide firmware updates.



 **AEM System Health Dashboard**

Key Features



Centralized Symphony VMS Administration

AEM allows administrators to manage settings across many servers in distributed network environments. Policy Templates allow for standardization of commonly configured items. Precedence ensures that settings explicitly defined by Enterprise Manager cannot be changed by local server administrators.



System Health Dashboard

Availability and health metrics are continually monitored for VMS servers, server farms and cameras. Server CPU, Memory and Storage utilization are tracked. A web-based dashboard provides on-demand access to deployment-wide system status. Health summary reports can be automatically e-mailed to administrators.



Auto-Update

AEM provides a cloud platform for VMS server software release management. Major and minor version upgrades and device pack updates can be scheduled to be installed immediately or within a specified change window.



Cloud Backup

Through AEM, Symphony server configurations can be periodically backed up to the cloud. In the event of misconfiguration or catastrophic server failure, settings can be easily restored.



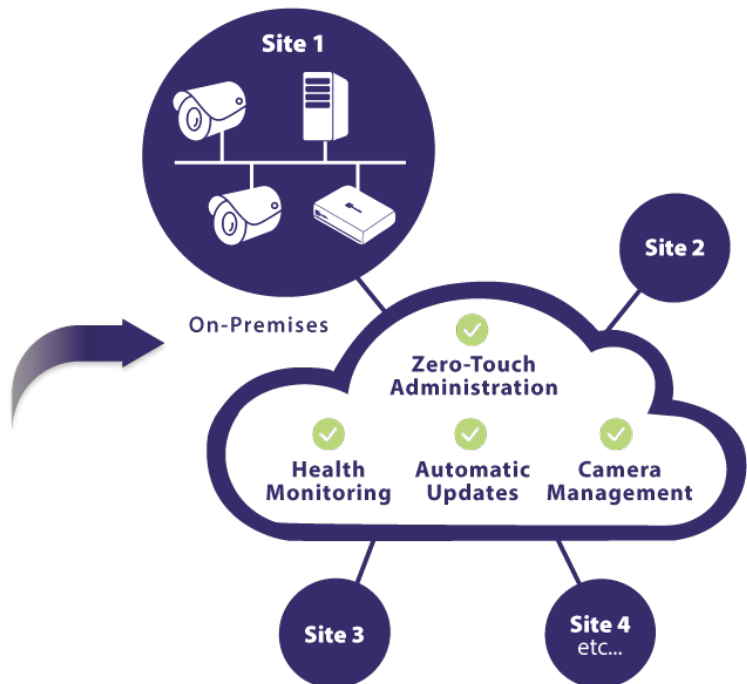
Camera Management

AEM significantly reduces the effort required to manage distributed network cameras. Using the AEM Bridge, cameras are automatically discovered and inventoried. Camera firmware can be centrally updated from the cloud, without the need for on-site personnel. AEM automates camera password update policies, reducing risk and easing best practice adoption.

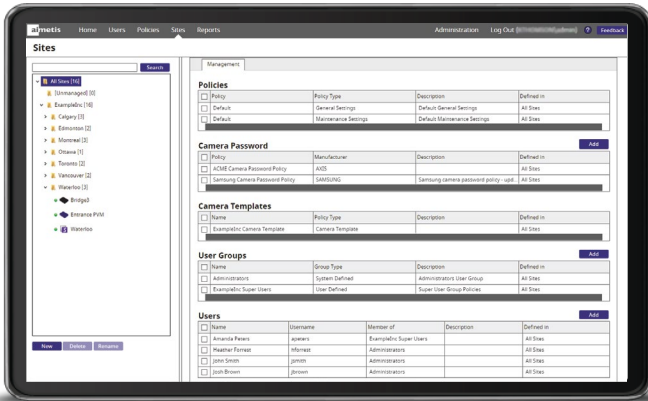


AEM Bridge

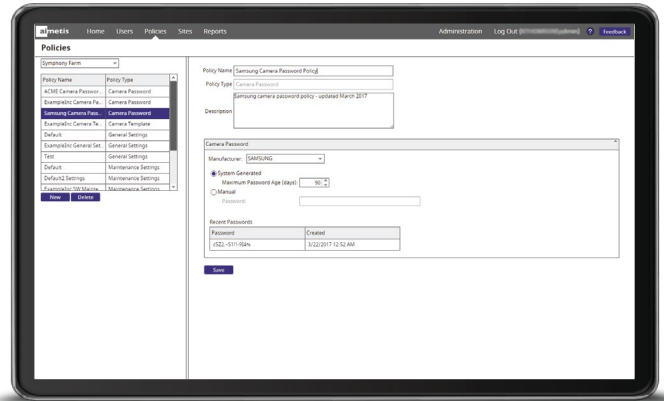
AEM Bridge is a purpose-built hardware device that is deployed on premises. It works in conjunction with AEM to facilitate advanced camera management. With a compact footprint and powered by PoE, the Bridge makes efficient use of space and power. In distributed surveillance networks, typically one AEM Bridge will be required per site.



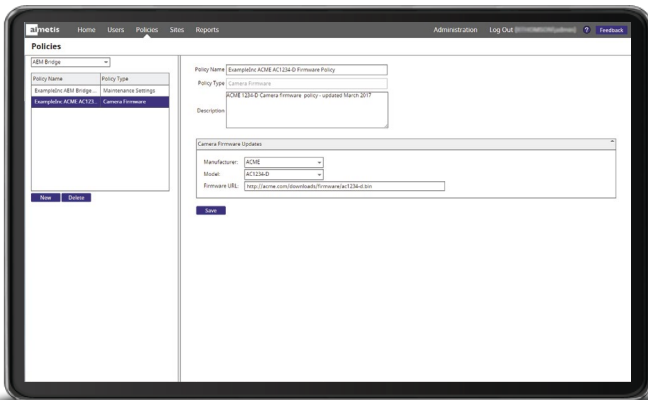
Key Features



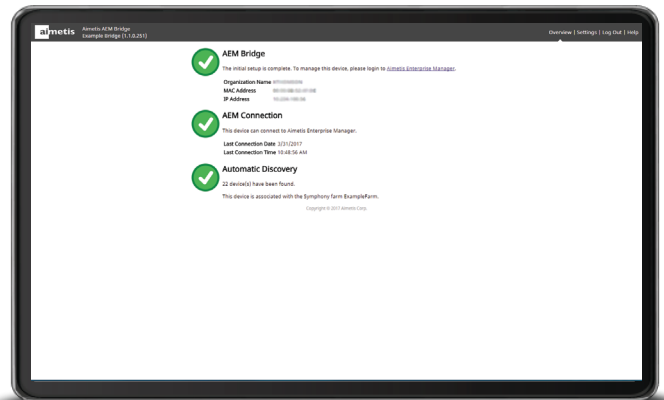
AEM Sites and Policies



AEM Camera Password Management



AEM Camera Firmware Management



AEM Bridge Installation



AEM Bridge

AEM Features & Specifications

Supported Products

Aimetis Symphony software	6.14+
Aimetis Symphony licenses	Standard, Professional, Enterprise
Aimetis R-Series NVRs	7.0.4+
Aimetis E-Series PSAs	6.14+
Aimetis Thin Client	2.8+
Symphony Camera Mgmt	30+ brands

System Health Dashboard

Server & Device Monitoring	Continuous, via health packet updates
Dashboard Metrics	Server & device availability, server CPU, memory, storage, Symphony software & device pack versions, firmware versions
E-Mail Health Summaries	Hourly, daily, weekly

Management

Centralized Management	TLS encrypted browser interface
Administration	Role-based
System Configuration Backup	Automated, cloud-based
Account Security	Password protection, role-based account security
Cloud Security	<ul style="list-style-type: none">Outbound connection architecture<ul style="list-style-type: none">Customer premises equipment (CPE) initiatedFirewall friendlySSL encrypted (port 443)SSL Labs "A" rating

Software Release Management

Software Inventory	All installed Aimetis software
Software Distribution	Major, minor releases, device packs
Scheduling	Immediately or within specified change window

Policy Management

User Administration	Users & groups, permissions
System Defaults	General settings
Maintenance	Software updates & system backups

Camera Management

Inventory	Auto discovery & inventory report
Password Management	Automatic password update policy
Configuration Management	Camera configuration policy templates
Firmware Management	Centralized firmware updates

AEM Bridge

AEM Bridge Camera Mgmt	Axis, Bosch, Samsung, Vivotek
Operating System	Linux
USB 2.0 Ports	2
Network	1x 1Gigabit Ethernet
Network Protocols	TCP, UDP, IP, HTTP, RTSP, ICMP, ARP, DHCP, DNS, ONVIF
Operating Temperature	0 - 45°C, 32 - 113°F
Storage Temperature	- 20 - 45°C, -4 - 113°F
Dimensions	(mm) 175W x 120D x 35H, (in) 6.8W x 4.7D x 1.4H
Weight	600 g, 1.3 lb
Power	Power over Ethernet IEEE 802.3af Class 3, max. 8.5 W
Compliance	CE, FCC, RoHs
Mounting Options	Wall, shelf
Warranty	2 year

Ordering Information

AEM Bridge	AIM-AEM-A10S
AEM Symphony Server SaaS Subscription	Per server block, 1 to 5 year term
AEM Device SaaS Subscription	Per device block, 1 to 5 year term