



by Schneider Electric

# Sarix™

Mega-Performance Technologies



# A Higher Definition of Security

Megapixel technology ushered in a new era for the video security industry, providing clear, detailed and expansive images. Now Pelco has advanced this technology by developing an innovative platform that defines the next generation of imaging performance. Created to overcome the limitations security professionals previously experienced with megapixel cameras, Sarix technology sets a new standard for performance.

Megapixel Technology Delivers a Wide Range of Resolution Choices

**3.1 MP**  
**2048x1536**

**2.1 MP**  
**1920x1080**

**1.3 MP**  
**1280x1024**

**0.5 SVGA**  
**800x600**



# Sarix Technology Platform



With Sarix technology, best-in-class imaging science delivers high-definition (HD) resolution images, advanced lowlight capabilities, consistent color science, and unmatched processing power. Built upon the three pillars of innovative imaging science, sophisticated industrial design and advanced process power, Sarix is a truly revolutionary new approach to video security.

## Imaging Science

Sarix sets the standard for low-light performance by multiplying and averaging available light per pixel in order to provide the highest degree of sensitivity. Sarix technology also produces consistent detailed color across all products for accurate subject tracking.

- High-Definition (HD) Resolution
- Standard-Definition (SD) Resolution
- Advanced Low Light Capability
- Consistent Color Science

## Industrial Design

Sarix-based cameras are designed to reduce installation time. Exceptionally easy-to-install and easy-to-focus, these systems also feature sleek, modern designs to complement building architecture.

- Auto Back Focus (ABF)
- Advanced Network Camera Setup
- Card Slots for Local Storage
- Accessory Ports for Additional Features
- Local Service Jacks for Easy Installation
- PoE and 24VAC
- Sleek Modern Design

## Processing Power

Sarix features High-Profile H.264 compression for optimized image quality and minimized bandwidth, along with base-line H.264, MJPEG and MPEG4 compression for the flexibility to meet various system requirements. Sarix also enables users to run both Pelco and third-party analytics.

- H.264, MJPEG and MPEG4 Compression
- Extended Platform (EP) for 30ips @ 1080p
- Real-Time, High-Frame Rate Images
- Built-In Pelco Analytics and Third Party Analytics



Advanced imaging science delivers consistent color and high sensitivity.



Sarix IX Series Cameras feature a modern, sophisticated design.



Sarix Technology Powers IX, ID and IE Series Cameras



Advanced Remote Configuration

# The Sarix Advantage



Designed with both security and IT professionals in mind, Sarix solves many of the challenges typically associated with megapixel network cameras. By maximizing the benefits of megapixel camera performance through the introduction of industry-leading features and capabilities, Sarix technology is the solution the industry has been waiting for.

## Low Light Performance

In the past, megapixel cameras have struggled to produce clear images in low light conditions. Sarix technology overcomes this problem, out performing every other megapixel cameras in the security industry. Sarix also utilizes digital noise reduction for lower bit rates and significant savings of hard drive space.

## Ease of Installation

Designed to save installation time and expense, Sarix based cameras come with the unique Auto Back Focus (ABF) feature, giving installers the ability to instantly achieve perfect focus with just the touch of a button. Sarix technology also boasts features like local service jacks, advanced network camera setup, PoE and 24VAC.

## Advanced Compression Methods

Because not all compression methods are created equal, Sarix technology gives users the flexibility to select MJPEG, MPEG4, H.264 or industry-leading High Profile H.264 compression. Compared to MPEG4 compression, High Profile H.264 can be up to 40% more efficient for optimized video quality and minimal bandwidth consumption.

## Extended Platform

The Sarix Extended Platform (EP) series offers advanced processing power ideal for running Pelco analytics or third-party analytic suites including ObjectVideo. This added processing power gives Sarix-based EP cameras the ability to run video analytics while still delivering high-performance HD video at real time frame rates.

## Open Architecture

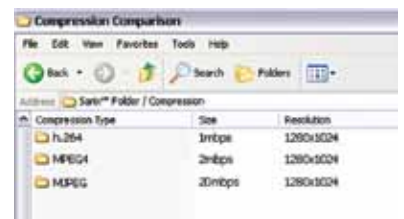
Built upon open IP standards, Sarix technology allows for full connectivity through an open Application Programming Interface (API) for third party manufacturer integration. With this powerful tool, applications can be developed to manage, view and record video from any Sarix-based network camera system.



Auto Back Focus Maximizes Image Quality



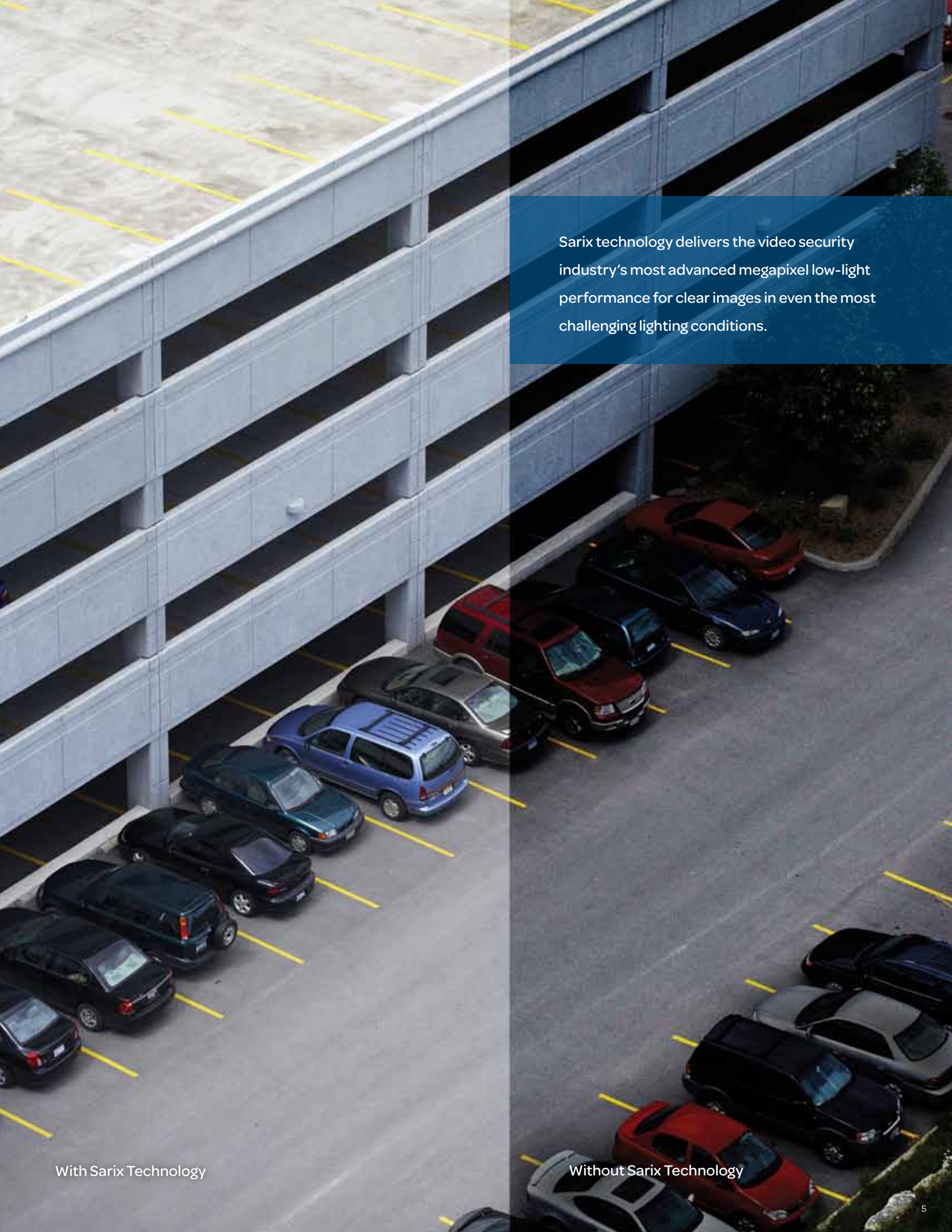
Local Service Jacks for Easy Installation



H.264, MJPEG or MPEG4 Compression



Sarix-Based Cameras Feature Built-In Analytics



Sarix technology delivers the video security industry's most advanced megapixel low-light performance for clear images in even the most challenging lighting conditions.

With Sarix Technology

Without Sarix Technology



These powerful cameras can be used in practically any environment. Customize IX Series Fixed Network Cameras with a Pelco megapixel lens or a Pelco Enclosure for indoor or outdoor use.

STORES

# Sarix IX Series

## Fixed Network Cameras



Ranging from 0.5 standard-definition to 3.1 megapixel high-definition cameras, the IX Series cameras combine world class Sarix technology with a modern, sleek design. Built upon open IP standards and featuring high performance processing power for running analytics, the Sarix IX Series is ideal for use in any number of installations.

### Sophisticated Design

Featuring an aesthetically pleasing design ideal that complements building architecture, these cameras can also be used with a wide array of Pelco enclosures for indoor and outdoor installations.

### Open Standards

Built with open source Linux, Sarix-based cameras including the IX Series allow for seamless third-party integration with the Pelco Application Programming Interface (API). Every camera comes standard with one built-in analytic, and can run Pelco and third-party analytic suites.

### IX Series Product Features

- Open IP Standards
- 0.5 (SD), 1.3, 2.1, or 3.1 Megapixel Resolution
- Auto Back Focus
- H.264, MJPEG or MPEG 4 Compression
- Color and Day/Night Models
- Video Setup Jack
- Sensitivity Down to 0.03 lux
- Power over Ethernet or 24 VAC
- Up to 2 Simultaneous Video Streams
- Web Viewing, up to 16 Cameras Simultaneously
- Local Storage (Mini SD) for Alarm Capture




Modern Design




Fast, Easy Installation

### IX Series Sarix Network Cameras

PRODUCT	MODEL	DESCRIPTION
	IXE20C	Sarix EP Network Color Camera, 2.1 Megapixel
	IXE20DN	Sarix EP Network Day/Night Camera, 2.1 Megapixel
	IX30C	Sarix Network Color Camera, 3.1 Megapixel
	IX30DN	Sarix Network Day/Night Camera, 3.1 Megapixel
	IX10C	Sarix Network Color Camera, 1.3 Megapixel
	IX10DN	Sarix Network Day/Night Camera, 1.3 Megapixel
	IXSOC	Sarix Network Color Camera, SVGA, 0.5 Megapixel
	IXSODN	Sarix Network Day/Night Camera, SVGA, 0.5 Megapixel

### Megapixel Lenses

PRODUCT	MODEL	DESCRIPTION
	13M15-50	3.0 Megapixel Lens, 15-50mm, F/1.5-2.1
	13M2.2-6	3.0 Megapixel Lens, 2.2-6mm, F/1.3-2.0
	13M2.8-12	3.0 Megapixel Lens, 2.8-12mm, F/1.4-2.7
	13M2.8-8	3.0 Megapixel Lens, 2.8-8mm, F/1.2-1.9

The Sarix ID Series Indoor Network Dome raises the bar for fast and easy installation. These domes can be installed in minutes with practically no tools, saving both time and money.



# Sarix ID Series Cameras

## Indoor Network Fixed Dome



Featuring all the powerful performance of Sarix technology along with several innovations and benefits not found in any other dome, the Sarix ID Series is setting a new standard for megapixel (HD) and standard definition performance in an integrated dome.

### Auto Back Focus (ABF)

Because of the small pixels of megapixel cameras, dome enclosures can act like a lens that shifts the camera's focus. But ID Series cameras feature ABF, allowing installers to achieve perfect focus with the touch of a button, after the dome has been installed.

### Advanced Imaging

The Sarix ID Series features CS mount lenses for a lower f-stop, higher quality optics, and exceptional versatility. Because of this versatility, the Sarix ID Series can accept a 15-50mm lens to achieve long telephoto images in an integrated dome.





Interchangeable CS Mount Lenses

### ID Series Product Features

- Open IP Standards
- Interchangeable CS Mount Lenses
- Auto Back Focus
- 0.5 (SD), 1.3, 2.1, or 3.1 Megapixel Resolution
- H.264, MJPEG or MPEG 4 Compression
- Color and Day/Night Capability
- Video Setup Jack
- Sensitivity Down to 0.03 lux
- Power over Ethernet or 24 VAC
- Up to 2 Simultaneous Video Streams
- Local Storage (Micro SD) for Alarm Capture
- Web Viewing, up to 16 Cameras Simultaneously

### ID Series Sarix Fixed Dome Network Cameras [Available Q3 2009]

PRODUCT	MODEL	DESCRIPTION	PRODUCT	MODEL	DESCRIPTION
	IDE20DN8-1	Sarix Indoor Fixed Dome Network Camera; Extended Platform 2.1 Megapixel; Day/Night, M2.8-8mm Varifocal Megapixel Lens; Clear Dome		ID10DN-0	Sarix Indoor Fixed Dome Network Camera 1.3 Megapixel; Day/Night, No Lens; Smoked Dome or Available with Clear Dome ID10DN-1
	IDE20DN-0	Sarix Indoor Fixed Dome Network Camera; Extended Platform 2.1 Megapixel; Day/Night, No Lens; Smoked Dome or Available with Clear Dome IDE20DN-1		ID10C-0	Sarix Indoor Fixed Dome Network Camera 1.3 Megapixel; Color, No Lens; Smoked Dome or Available with Clear Dome ID10C-1
	ID30DN8-1	Sarix Indoor Fixed Dome Network Camera 3.1 Megapixel; Day/Night, M2.8-8mm Varifocal Megapixel Lens; Clear Dome		IDS0DN8-1	Sarix Indoor Fixed Dome Network Camera 0.5 Megapixel; Day/Night, M2.8-8mm Varifocal Megapixel Lens; Clear Dome
	ID30DN-0	Sarix Indoor Fixed Dome Network Camera 3.1 Megapixel; Day/Night, No Lens; Smoked Dome or Available with Clear Dome ID30DN-1		IDS0C8-1	Sarix Indoor Fixed Dome Network Camera 0.5 Megapixel; Color, M2.8-8mm Varifocal Megapixel Lens; Clear Dome
	ID10DN8-1	Sarix Indoor Fixed Dome Network Camera 1.3 Megapixel; Day/Night, M2.8-8mm Varifocal Megapixel Lens; Clear Dome		IDS0DN-0	Sarix Indoor Fixed Dome Network Camera 0.5 Megapixel; Day/Night, No-Lens Smoked Dome or Available with Clear Dome IDS0DN-1
	ID10C8-1	Sarix Indoor Fixed Dome Network Camera 1.3 Megapixel; Color, M2.8-8mm Varifocal Megapixel Lens; Clear Dome		IDS0C-0	Sarix Indoor Fixed Dome Network Camera 0.5 Megapixel; Color, No Lens; Smoked Dome or Available with Clear Dome IDS0C-1

# Sarix IE Series Cameras

## Integrated Rugged Fixed Dome



Ideal for a wide range of outdoor or indoor environments, the IE Series Integrated Fixed Dome packs the power of Sarix technology into a rugged, vandal resistant enclosure. The IE Series is the security industry's most advanced, all weather imaging solution.

### Certifications

All Sarix IE Series cameras are built to the highest standards. After undergoing extensive third-party testing, these systems have been awarded a series of certifications and ratings for outdoor performance including:

- CE, Class B
- FCC, Class B
- Meets IP66
- C-Tick
- UL/cUL Listed





Vandal Resistant Enclosure

### IE Series Product Features

- Open IP Standards
- Interchangeable CS-Mount Lenses
- Auto Back Focus
- 0.5 (SD), 1.3, 2.1, or 3.1 Megapixel Resolution
- H.264, MPEG4 and MJPEG Compression
- Color and Day/Night Capability
- Sensitivity Down to 0.03 lux
- Power over Ethernet or 24 VAC
- Up to Two Simultaneous Video Streams
- Web Viewing, up to 16 Cameras Simultaneously
- Local Storage (Micro SD) for Alarm Capture
- Audio

### IE Series Sarix Integrated Rugged Fixed Dome Cameras

PRODUCT	MODEL	DESCRIPTION	PRODUCT	MODEL	DESCRIPTION
	IEE20DN8-1	Sarix Outdoor Fixed Dome Network Camera; Extended Platform, 2.1 Megapixel; Day/Night, 2.8-8 mm Varifocal Megapixel Lens; Clear Dome		IE10DN-0	Sarix Outdoor Fixed Dome Network Camera; 1.3 Megapixel; Day/Night; No Lens, Smoked Dome or Available with a Clear Dome IE10DN-1
	IEE20DN-0	Sarix Outdoor Fixed Dome Network Camera; Extended Platform, 2.1 Megapixel; Day/Night, No Lens; Smoked Dome or Available with Clear Dome IEE20DN-1		IE10C-0	Sarix Outdoor Fixed Dome Network Camera; 1.3 Megapixel; Color, No Lens; Smoked Dome or Available with Clear Dome IE10C-1
	IE30DN8-1	Sarix Outdoor Fixed Dome Network Camera; 3.1 Megapixel; Day/Night, M2.8-8mm Varifocal Megapixel Lens; Clear Dome		IES0DN8-1	Sarix Outdoor Fixed Dome Network Camera; 0.5 Megapixel; Day/Night, 2.8-8 mm Varifocal Standard Lens; Clear Dome
	IE30DN-0	Sarix Outdoor Fixed Dome Network Camera; 3.1 Megapixel; Day/Night, No Lens; Smoked Dome or Available with Clear Dome IE30DN-1		IES0C8-1	Sarix Outdoor Fixed Dome Network Camera; 0.5 Megapixel; Color, M2.8-8mm Varifocal Standard Lens; Clear Dome
	IE10DN8-1	Sarix Outdoor Fixed Dome Network Camera; 1.3 Megapixel; Day/Night, M2.8-8mm Varifocal Megapixel Lens; Clear Dome		IES0DN-0	Sarix Indoor Fixed Dome Network Camera 0.5 Megapixel; Day/Night, No-Lens Smoked Dome or Available with Clear Dome IES0DN-1
	IE10C8-1	Sarix Outdoor Fixed Dome Network Camera; 1.3 Megapixel; Color; 2.8-8mm Varifocal Megapixel Lens; Clear Dome		IES0C-0	Sarix Outdoor Fixed Dome Network Camera; 0.5 Megapixel; Color, No Lens; Smoked Dome or Available with Clear Dome IES0C-1

# Sarix Accessories



Sarix technology is the platform upon which Sarix-based cameras are flexible solutions that can easily be configured to meet the needs of any installation. With Pelco's wide array of lenses, mounts, enclosures and HD monitors, it is easy to design a custom fit security solution.

## Interchangeable Lenses

All ID, IX and IE series cameras can be used with a wide array of interchangeable megapixel and standard definition lenses. These CS mount lenses deliver amazingly low F-stops and high quality optics. Also, because there are so many lenses to choose from, users have an unprecedented level of versatility to design a camera solution ideal for any installation.



CS Mount Lenses

## Enclosures for IX Series

Pelco offers a complete line of high quality enclosures ideal for use with Sarix based cameras. Enclosures commonly used with the Sarix IX Series include the EH1512 Series Outdoor Enclosure, EH3512 Series Outdoor Enclosure and DF8 Series Fixed Mount Dome Enclosure.



Rugged Outdoor Enclosures

## Sarix ID and IE Series Mounts

Sarix series cameras boast multiple mounting options for maximum versatility. The ID Series has a pendent mount, corner mount, wall mount and also available a plenum-rated back box for in-ceiling installations. IE Series cameras offer surface adaptors, pendent mounts, wall mounts and corner mounts.



Multiple Mount Options

## High-Definition Displays

Get more from your Sarix based camera by viewing video on a Pelco Full HD monitor. The optimal choice for displaying the highest quality images, Full HD monitors are specifically designed for the special demands for professional security and surveillance.

## Get More with Pelco

It all starts with a relentless commitment to Fanatical Customer Service. Each and every person at Pelco will stop at nothing to ensure that our customers are completely satisfied each and every time. Just ask anyone who has ever worked with us. Stringent design, along with engineering and testing certifications ensure that your next Pelco purchase will deliver the performance that you and your installation demand.



Full HD Monitors



by **Schneider** Electric

*The recognized worldwide leader in video and security systems, Pelco boasts the most comprehensive array of products, services and expertise available in today's marketplace. And now as a member of the Schneider Electric family, Pelco brings a network of assets backed by the strength of a Fortune 500 company to help you define and achieve your business objectives.*

[www.pelco.com](http://www.pelco.com)

Pelco, Inc. Worldwide Headquarters 3500 Pelco Way Clovis, California 93612 USA  
(800) 289-9100 (800) 289-9150 Fax +1 (559) 292-1981 International +1 (559) 348-1120 International Fax

Worldwide Locations: Australia Canada China Finland France Germany Italy Macau The Netherlands  
Russia Singapore South Africa Spain Sweden United Arab Emirates United Kingdom United States

Features and specifications subject to change without notice. ©Copyright 2009, Pelco, Inc. All rights reserved.

Axis is a registered trademark of Axis Communications.  
Windows Vista is a registered trademark of Microsoft.

