

NEXTO STORAGE BRIDGE NSB-25

Modular Memory Card Backup System



Korean Patent No. 0445182
U.S. Patent No. US7,447,863 B2

NEXTO STORAGE Bridge

KEY FEATURES

Interchangeable Memory Card Module

- SxS PRO / SxS PRO+ / SxS-1
- P2 / P2E / express P2
- CFast
- XQD
- AXSM
- REDMAG
- 2.5" SSD / 2.5" HDD
- AJA Quad
- CF
- SDHC / SDXC

Playback 2K, Preview 4K

- 5" TFT-LCD 800 x 480 touchscreen + Internal speaker & Stereo audio out Jack, HDMI OUT to an external monitor

Simultaneously Backup up to THREE drives with a single operation (MCopy)

- Create three copies with 2 internal hard drive modules and one external USB3.0 (or RAID) drive

Make Copies on-location without a Laptop

- Make a copy from the internal hard drive module to the second HDD module or to an external USB3.0 drive

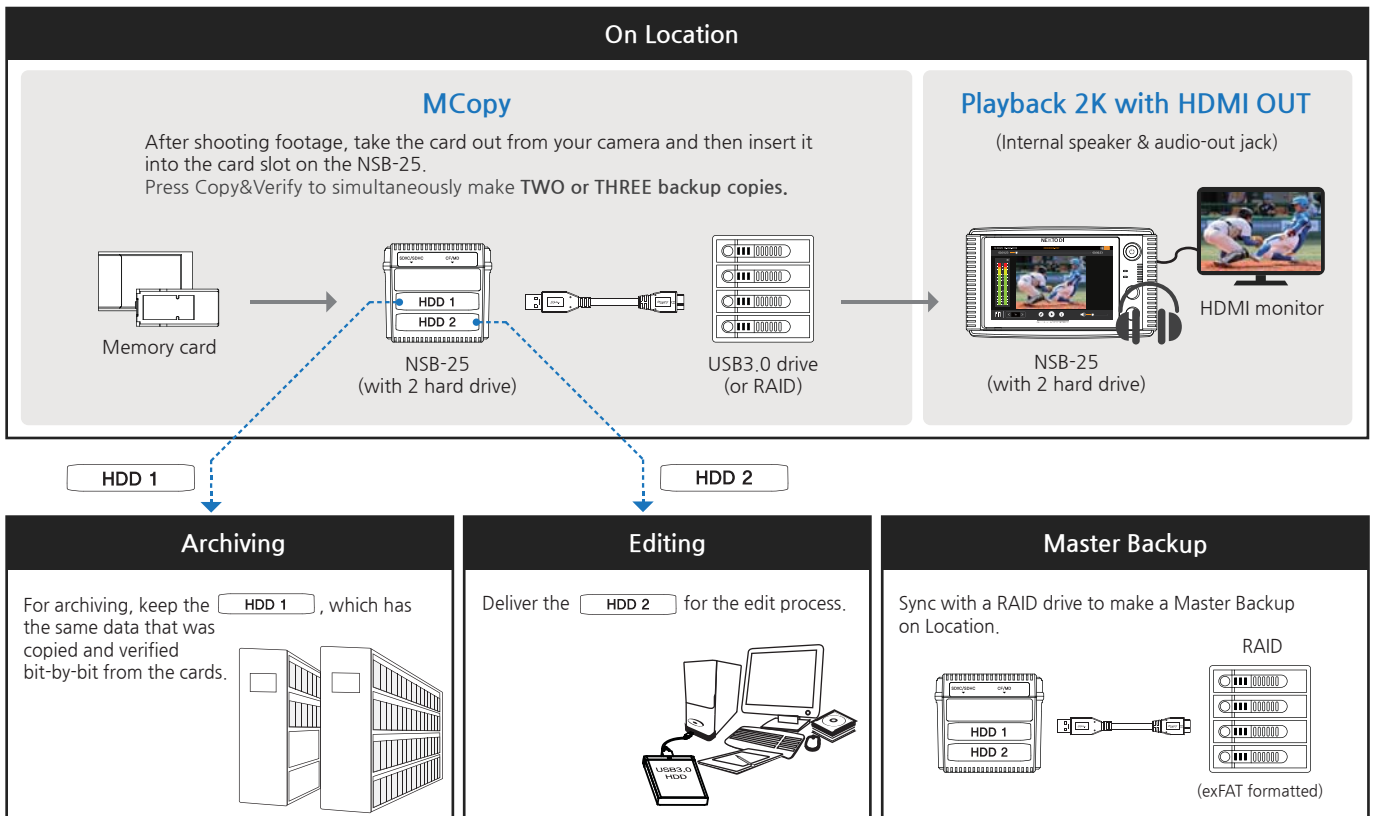
Log File

- Generates a LOG file to safely keep track of usage by the user

Copying a 4GB or Larger File

- Supports exFAT, FAT32, UDF and HFS+ file formats

Basic Workflows for the NEXTO STORAGE Bridge NSB-25



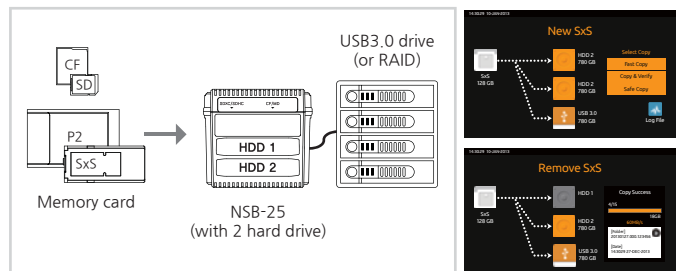
Interchangeable Memory card Module

The NSB-25 is an expandable backup solution, designed with the flexibility to create a backup from almost every memory card, with an interchangeable memory card module. The optional modules support SxS, XQD, AXSM, P2, express P2, AJA QUAD, CFast, REDMAG, or 2.5" SSD. The NSB-25 has two fixed memory card slots: one for a CompactFlash (CF) card and one for an SD (Secure Digital) card.



Simultaneously Backup up to THREE drives (MCopy)

After shooting footage, take the card out from your camera, and then insert it into the card slot on the NSB-25. You can easily and securely create up to three backups. (two hard drive modules, one external drive) simultaneously.



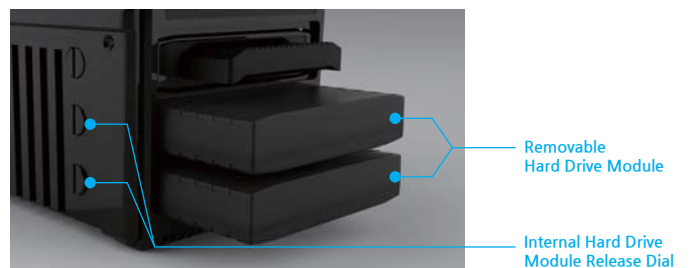
Incremental Backup

The NSB-25 supports incremental backup. Only those files that have changed since the last backup will be copied, to perform faster and consume minimum storage space.



Removable Two Hard Drive Modules (Bridge Pellet)

The NSB-25 ships with 2 removable hard drive modules (diskless). A module is easily swappable with another one to expand storage space. (The hard drive modules are required to add your own hard drive or SSD)



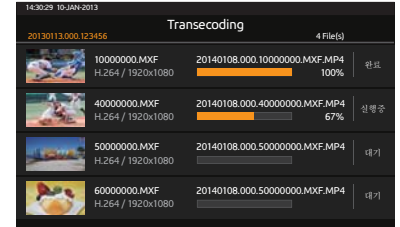
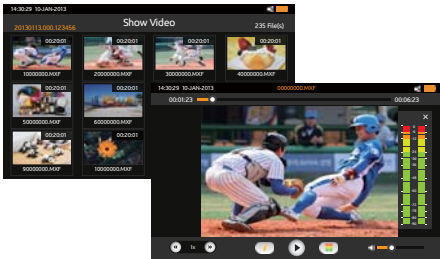
Playback 2K, Preview 4K

The NSB-25 plays back 2K or preview 4K clips on a 5" color TFT LCD monitor. You can also attach a bigger monitor through the **HDMI** interface for a better viewing experience.

Playback 2K : MPEG2 (upto 50Mbps), AVCHD, H.264, PRORES, DNxHD

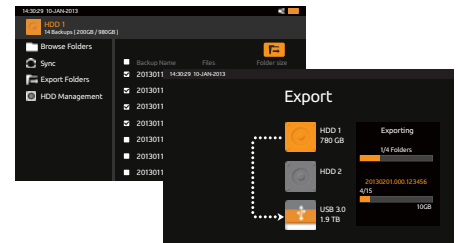
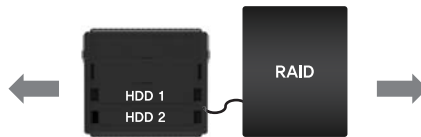
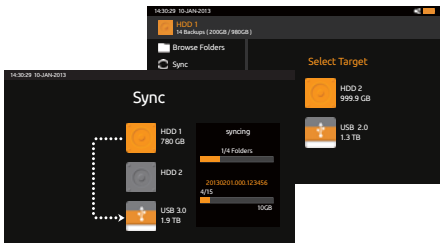
Preview 2K : AVC-Intra, XAVC

Preview 4K : Cinema DNG (with firmware upgrade later)



Copy All Files to Another Drive (Sync)

You can quickly and easily copy all files from an internal hard drive module (of the NSB-25) to another drive. Only those files that have changed since the last sync will be copied, to perform faster and save space.

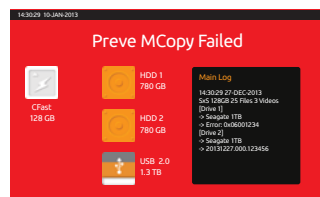
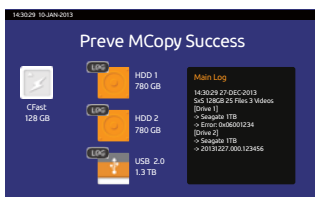


Export Folders

You can select multiple folders and move them from an internal hard drive module to another drive. The selected folders must be located on the same drive.

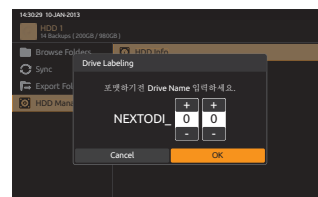
Display Previous Backup Status

The NSB-25 automatically shuts down if it detects inactivity after the XCopy, MCopy or Verify process. When the device is switched back on again, it displays the previous backup status; either "Success" or "Failed". You can check details in the LOG file for that drive when the Success message is displayed.



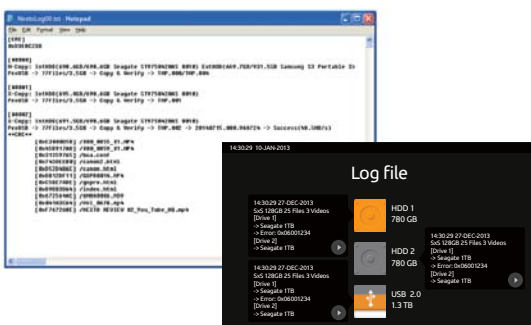
Naming a Drive and Folder

When you backup from the card, a folder is automatically created. The folder is named according to the files most recent date (ex. 20140401.000). Folders are numbered in the order they are copied. For multiple users, the NSB-25 does not change the drive name during the Hard drive format. Set your preferred Drive name at the computer to differentiate your drives.



Log File

The NSB-25 generates a LOG file (CRC-protected) to keep track of usage by the user and then saves it on each drive attached to it. The Log file provides information about XCopy, Sync, computer connectivity etc.



Connect it to your computer via the USB3.0 Interface

The NSB-25 attaches to your computer via the fast USB 3.0 cable. Once connected, you can browse, edit or transfer contents of internal hard drive modules to your computer. The removable internal hard drive modules also feature fast USB 3.0 connectivity.

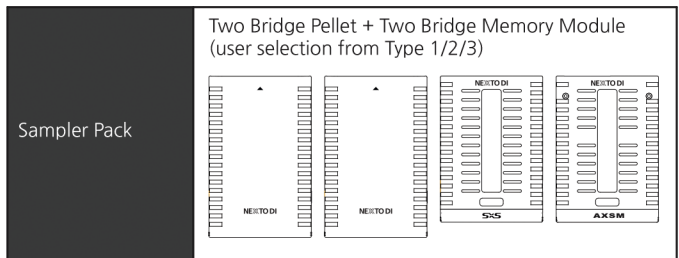


SPECIFICATIONS

Model Name	NEXTO STORAGE BRIDGE
Model Number	NSB-25
LCD	5" Color TFT LCD: 800*480, 24-bit color
Memory Support	Built in slot : CF / SD (SDHC/SDXC with UHS-1 support)
	Exchangeable Memory module slot : 1 ea See Bridge Memory Module
	File system format : FAT32 / exFAT / UDF / HFS+
Backup Storage	Two removable hard drive slot for Bridge Pellet (sold separately) Formatted using exFAT
	One USB3.0 Host port for any USB3.0 drive (must be formatted using exFAT)
Video Support	Play 2K : AVCHD / H.264 / MPEG2 (upto 50Mbps) / ProRes / DNxHD / DV / DVCPRO HD
	Preview (Best effort) : XAVC, AVC-Intra, 4K RAW (DNG) Supported Video File Format : .mxf / .mov / .mp4 / .mts / .dv / (.avi)
Video output	Built in LCD or HDMI (v1.4)
Audio Support	LPCM Audio
Audio output	Built in Speaker (mono). Built in Audio Jack
Photo support	JPEG (.jpg) / Canon Raw (.cr2) / Nikon Raw (.nef)
Battery	3.7V 13200mAh Rechargeable Li-Poly Battery Rechargeable via AC power adapter (6 hrs), USB cable (12 hrs), Car charger cable. Use 3 hours (with two Bridge Pellet connected) with single charge. Copy 1TB to two drive simultaneous with single charge.
AC Power Adapter	Input : 100~240V AC Output : 12V 2A DC
Computer I/F	USB3.0 device (5G bps)
External Device Support	USB3.0 hard drive / RAID
OS compatibility	Windows 8/7/VISTA/XP *Windows XP (SP2, 3) requires exFAT patch update Mac OS X 10.6.6 and above, Linux2.4.18 and above
Weight	1.5 kg / 3.3 lb (with no HDD & Memory module installed)
Dimension	176 x 103 x 96 (mm) / 7 x 4 x 3.8 (inches)
Contents	NSB-25 main unit / AC power adapter / USB3.0 cable / Rubber bumpers / Car charger cable / Manual / Hand strap

Model Name	Bridge Pellet
Model Number	NSB-BP1
Internal Drive	2.5 inches, 9.5 mm height SATA(1/2/3) hard drive or Solid State Drive
Computer connection	USB3.0 device (5Gbps)
NSB-25 connection	SATA 2 (3Gbps)
File system format	exFAT
Power	USB Bus powered
Size / Weight	123 x 78.5 x 17 (mm), 4.8 x 3 x 0.6 (inches) / 80 g

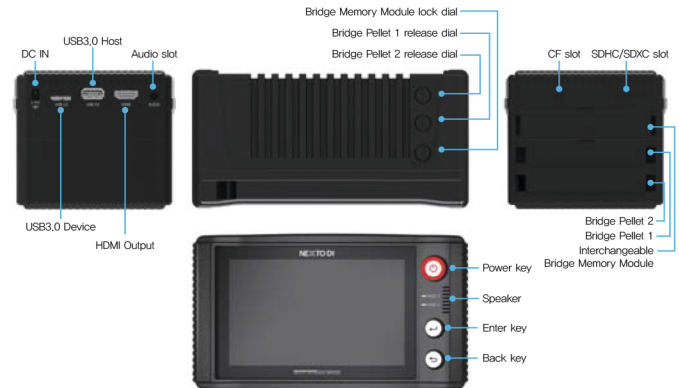
Model Name	Bridge Memory Module
Type 1	SxS / XQD / express P2
Type 2	RED / CFast / AJA QUAD / 2.5" SSD (or hard drive)
Type 3	P2
Type 4	AXSM



4K Video SW Package will be available later (Q2 2015)

Transcode 4K RAW video to H.264 mov file for play at 2K
Transcode XAVC / AVC Intra to H.264 mov file for play at 2K

Erhältlich bei
VIDEOR E. Hartig GmbH
broadcast@videor.com
videor.com
+49 6074 888-200



NEXTODI

E-702 Digital Empire B/D 980-3 Yountong-Dong Suwon Korea
Tel. +82(0)313035370 Fax. +82(0)313035380
www.nextodi.com
www.nextodi.eu

©2014 NextoDI Co., Ltd. All rights reserved.
Features and specifications subject to change without notice.
"NextoDI", "NEXTO STORAGE BRIDGE", "NSB", "NSB-25" and "X-Copy" are registered trademarks and property of NextoDI Co., Ltd. Republic of Korea
"Sony" "SxS PRO" and "P2/P2E" are registered trademarks of Sony Corporation, Japan.
"Panasonic" and "P2/P2E" are registered trademarks of panasonic Corporation, Japan.
"CompactFlash" is a registered trademarks of Sandisk Corp. "SD" is a trademarks of SD Card.
"Windows" is registered trademark of Microsoft Corporation, US.
"Mac OS" is a trademarks of Apple Inc. in the USA and other countries.
All other trademarks are the property of their respective owners.