



The CN-NMS network management device is designed to provide remote monitoring and control of ComNet dual redundant video, data, intercom dry contact and Ethernet transmission products. The module provides management for up to four C2-NMS connected chassis. The CN-NMS itself can either reside within a C2-NMS or C3 chassis.

Fault conditions are reported by SNMP, E-mail and web GUI or by use of the five integrated alarm relays. In addition an audible buzzer alarm can be configured for rapid local fault indication.

FEATURES

- › Manage up to 24 ComNet transmission modules located across four C2-NMS chassis
- › Web browser interface
- › SNMP V2c supported
- › SMTP email alerts provided on alarm conditions
- › CLI support via serial interface
- › 5 user configurable contact closure outputs
- › User configurable audible alarm for local fault reporting
- › Made in the U.S.A.
- › Lifetime Warranty

SUPPORTED PRODUCTS

- › FVT/FVR10D2I1C4E
- › FVT/FVR20D2I1C4E
- › FVT/FVR40D2I1C4E

SPECIFICATIONS

Ethernet Port (Electrical)

Data Interface	10/100BaseT(X) Ethernet
Data Rate	10/100 Mbps
	IEEE 802.3 Compliant
	Full Duplex or Half Duplex

C2-NMS Communication Ports

Data Interface	2-wire RS485
	Designed for CAT5 cable connection to each monitored card cage

Dry Contact

Channels	5 Outputs
Output	SPST Relay, 0.5 A Contact Rating - normally open

Connectors

Electrical Ethernet	RJ45
RS485	4 x RJ45
Serial Port	3-way Terminal Block
Dry Contacts	10-way Terminal Block

Indicating LEDs

Ethernet Port	Ethernet Link and Activity
Device	Power and Status
C2-NMS Comms	TX and RX Data Activity

Power

Operating Voltage	7 VDC to 15 VDC
Power Consumption	3 W Max

Mechanical

Size	6.1 x 5.3 x 1.1 in (15.5 x 13.5 x 2.8 cm)
Shipping Weight	< 2 lbs / 0.9 kg

Environmental

MTBF	>100,000 hours
Operating Temperature	-40°C to +75°C
Storage Temperature	-40°C to +85°C
Relative Humidity	0% to 95% (non-condensing) ¹

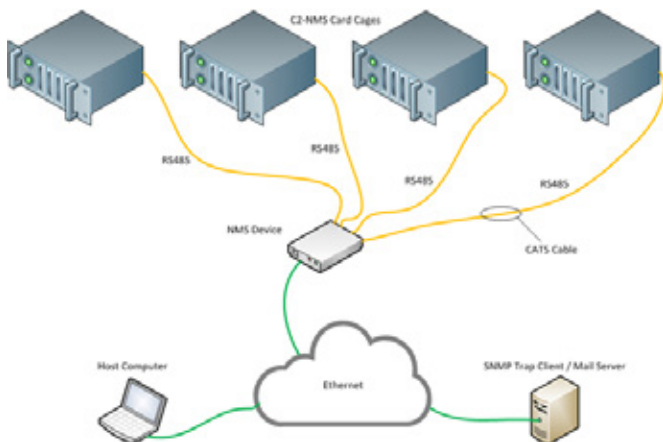
NOTE: In a continuing effort to improve and advance technology, product specifications are subject to change without notice.



ORDERING INFORMATION

Part Number	Description	Rack Slots
CN-NMS	Management module for up to four C2-NMS chassis	1
Included Accessories	DC Plug-in Power Supply, 90-264 VAC, 50/60 Hz (Included)	
Options	[1] Add suffix '/C' for Conformally Coated Circuit Boards to extend to condensation conditions (Extra charge, consult factory) DIN-Rail Mounting Adaptor Plate Kit - With mounting hardware (Optional, order model DINBKT1 or DINBKT4)	

TYPICAL APPLICATION



SCREEN SHOTS



Alerts



Device

Low Power Consumption