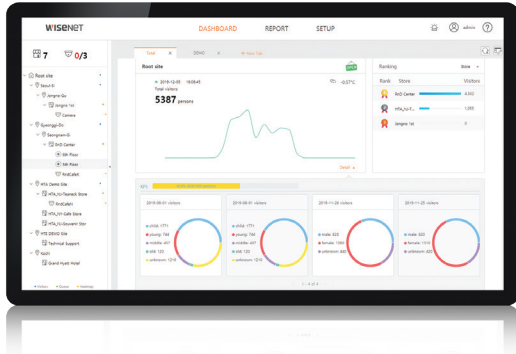


## Retail Insight 2.0

### Business Intelligence for Retail



- Advanced BI functions
- User friendly interface
- People counting
- Age and gender demographics (requires Wisenet AI cameras)
- Heatmap
- Queue management
- Customisable dashboard and report

#### People counting

Wisenet Retail Insight not only counts the number of visitors in real time but also offers age & gender analytics, providing insightful information to store owners. Owners can use this information to build sales strategies.

#### Heatmap

Heatmap feature measures and tracks customers dwell-time in certain locations, providing information on popular/unattractive products. Owners can configure the time duration to collect data at certain times.

#### Queue management

Queue management is crucial for large retailers. The feature captures long waiting lines in real time and manages the queues in an efficient way, reducing customer complaints.

#### User friendly interface

The content is presented in a user-friendly interface that's easy to configure with a multi tab function. Users can get the information they need in a quick overview and click on "Details" buttons for more information. Retail Insight also provides weather information and lets you know if the shop is open or not.

#### Regular automatic report

Wisenet Retail Insight offers reports on a daily, weekly, or monthly basis. Users can configure reports with the data they need, taking full advantage of the large size of the database and gaining information crucial in running retail stores.

		Features	
<b>DASHBOARD</b>	Display	Up to 5 tabs, up to 9 registered stores by function Weather, Business status Store tree, Camera status	
	People Count	Update cycle min 15 minutes, max 60 minutes, Rank display, Date comparison Gender, Age ratio (AI Camera)	
	Queue	Update cycle min 15 minutes, max 60 minutes Channel aggregation support, 6 levels of congestion	
	Heat-map	Update cycle min 1 hour, max 24 hours Time-lapse, Area view	
<b>REPORT</b>	BI function	People count, Queue management, Heat-map	
	Division Unit	Site, Store, Zone	
	Search period	Day, Week, Month, Period (Up to 3 Months), Day of week	
	Comparison period	Day, Week, Month	
	Export format	PDF, Excel, XML, CSV	
	Export	PC, E-Mail	
<b>SYSTEM</b>	Auto Generation	Day, Week, Month	
	Support channel	Up to 500 EA/Server	
	Site Setup	4 Level, Time zone, Address, KPI (People Count)	
	Store Setup	Store Map Add/Delete, Camera location, Time zone, Address, KPI (People Count)	
	User	Admin Group, User Group	
	Schedule	Store business hours, Holidays, Daily/ Weekly/ Monthly Report	
	Support Language	Korean, English, French, Italian, Spanish, German, Japanese, Russian, Swedish, Portuguese, Czech, Polish, Turkish, Dutch	
	Web browser	Chrome	
	<b>SYSTEM REQUIREMENTS</b>	CPU	Intel i7 or equivalent
		RAM	16GB
OS		Windows 7 / 10 (64bit)	
<b>SUPPORTED CAMERAS</b>	P Series	PNB-A9001, PND-A9081RF, PND-A9081RV, PNV-A9081R, PNO-A9081R, PNB-A8001, PND-A8081RF, PND-A8081RV, PNV-A8081R, PNO-A8081R	
	X Series	XNO-6010R, XNO-6020R, XNO-8020R, XNO-8030R, XNO-8040R, XND-6010, XND-8021, XND-6020R, XND-8020R, XND-8030R, XND-8040R, XNV-6020R, XNV-6010, XNV-6011, XNV-8020R, XNV-8030R, XNV-8040R, XNF-8010R, XNF-8010RV, XNF-8010RVM	
	Q Series	QNF-9010, QNF-8010, QND-8011, QND-8021, QND-6011, QND-6021	